

Recent trends of Seismic Isolation “SI” & Vibration Control “VC” Buildings in Japan

JSSI accumulates these data for SI & VC buildings,
with the cooperation of members.

These data were accumulated until the end of 2024.

A list of the members who cooperated is posted on the last page.

June 11, 2026

The Japan Society of Seismic Isolation

Recent trends of Seismic Isolation “SI” Buildings in Japan

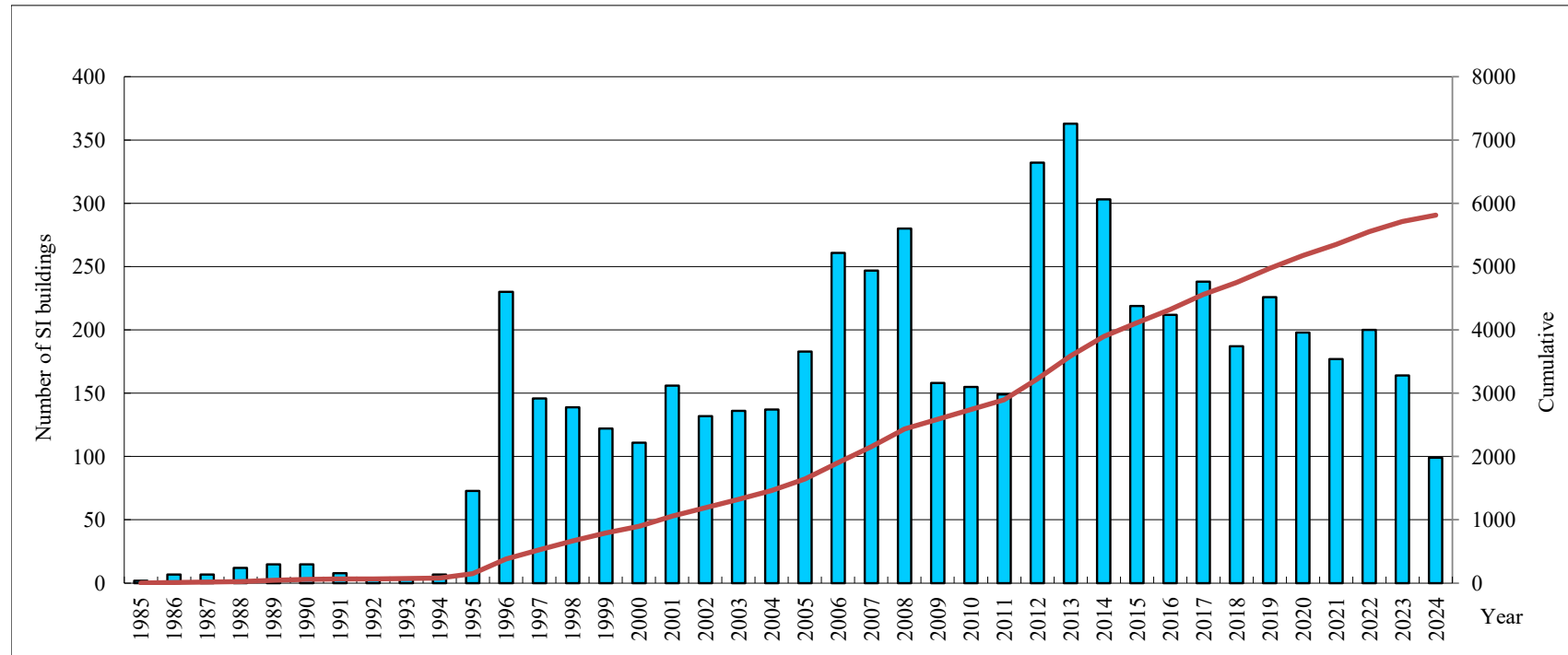
JSSI accumulates these data for SI buildings with the cooperation of members. These data were accumulated until the end of 2023.

Figures show number of SI buildings, by year. Data from ① to ④ and ⑥ to ⑫ show the number of buildings, and ⑤ shows the data of houses.

Aggregate results

- ① Number of SI buildings
- ② Number of SI buildings - Condominiums
- ③ Number of SI buildings - Hospitals/Clinics
- ④ Number of SI buildings - Public/Private
- ⑤ Number of SI Houses
- ⑥ Number of High-rise SI buildings
- ⑦ Usages of SI buildings
- ⑧ Number of SI retrofitted buildings
- ⑨ Number of SI retrofitted buildings - Public/Private
- ⑩ Number of SI retrofitted buildings - Construction method
- ⑪ Number of isolators installed
- ⑫ Types of Isolators installed

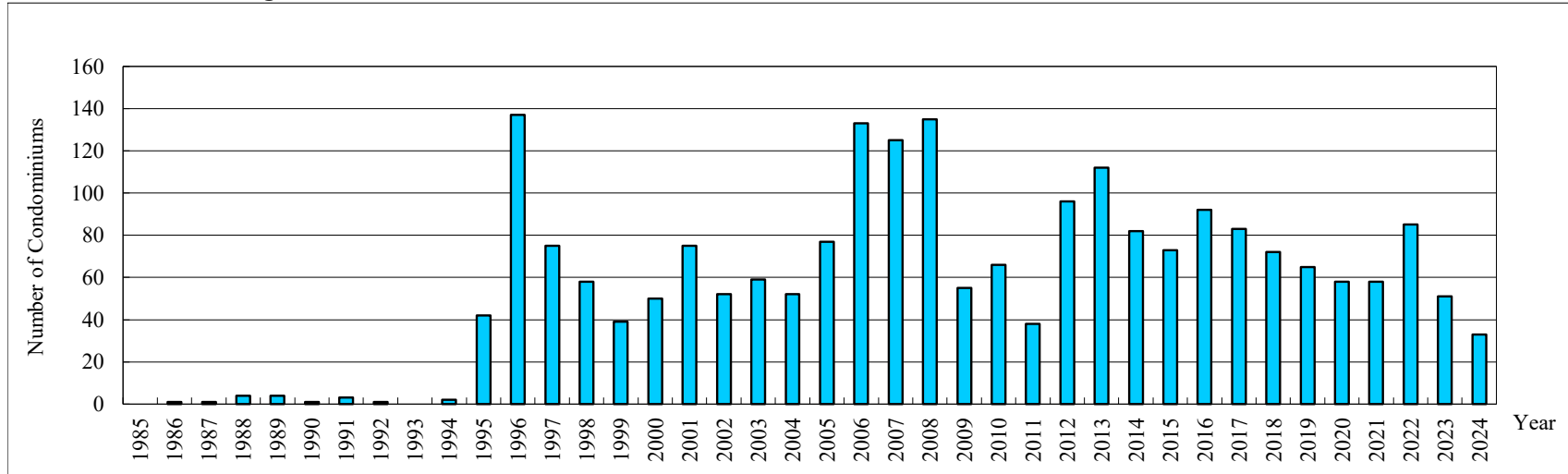
① Number of SI buildings



Year	1985	1986	1987	1988	1989	1990	1991	1992	1993	1994	1995	1996	1997	1998	1999	2000	2001	2002	2003	2004
SI buildings	2	7	7	12	15	15	8	3	4	7	73	230	146	139	122	111	156	132	136	137
Cumulative	2	9	16	28	43	58	66	69	73	80	153	383	529	668	790	901	1057	1189	1325	1462
Year	2005	2006	2007	2008	2009	2010	2011	2012	2013	2014	2015	2016	2017	2018	2019	2020	2021	2022	2023	2024
SI buildings	183	261	247	280	158	155	149	332	363	303	219	212	238	187	226	198	177	200	164	99
Cumulative	1645	1906	2153	2433	2591	2746	2895	3227	3590	3893	4112	4324	4562	4749	4975	5173	5350	5550	5714	5813

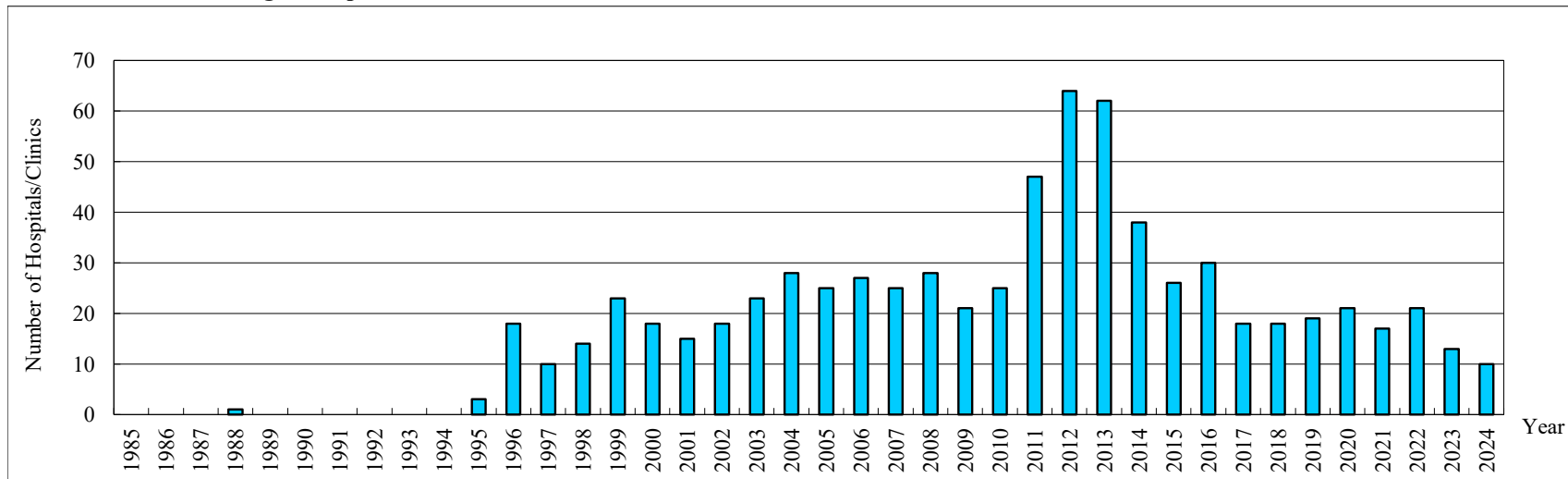
Total
SI buildings 5813

② Number of SI buildings - Condominiums



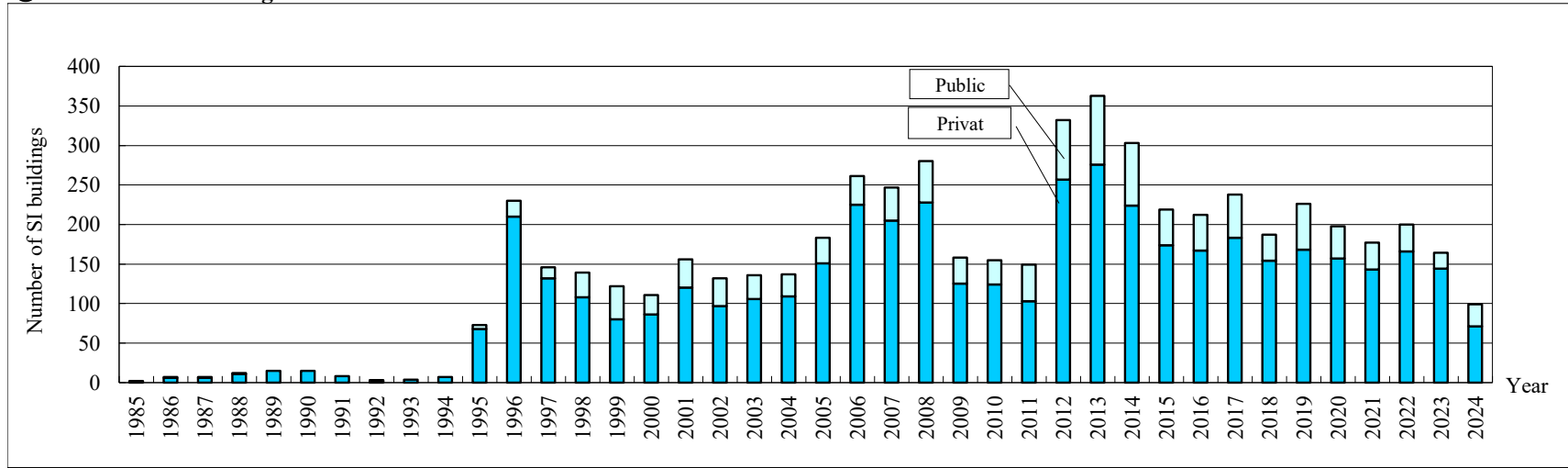
Year	1985	1986	1987	1988	1989	1990	1991	1992	1993	1994	1995	1996	1997	1998	1999	2000	2001	2002	2003	2004	
Condominiums	0	1	1	4	4	137	75	58	39	50	75	52	59	52							
Year	2005	2006	2007	2008	2009	2010	2011	2012	2013	2014	2015	2016	2017	2018	2019	2020	2021	2022	2023	2024	
Condominiums	77	133	125	135	55	66	38	96	112	82	73	92	83	72	65	58	58	85	51	33	
	Total Condominiums																				2245

③ Number of SI buildings - Hospitals/Clinics



Year	1985	1986	1987	1988	1989	1990	1991	1992	1993	1994	1995	1996	1997	1998	1999	2000	2001	2002	2003	2004	
Hospitals/Clinics	0	0	0	1	0	0	0	0	0	0	3	18	10	14	23	18	15	18	23	28	
Year	2005	2006	2007	2008	2009	2010	2011	2012	2013	2014	2015	2016	2017	2018	2019	2020	2021	2022	2023	2024	
Hospitals/Clinics	25	27	25	28	21	25	47	64	62	38	26	30	18	18	19	21	17	21	13	10	
	Total Hospitals/Clinics																				726

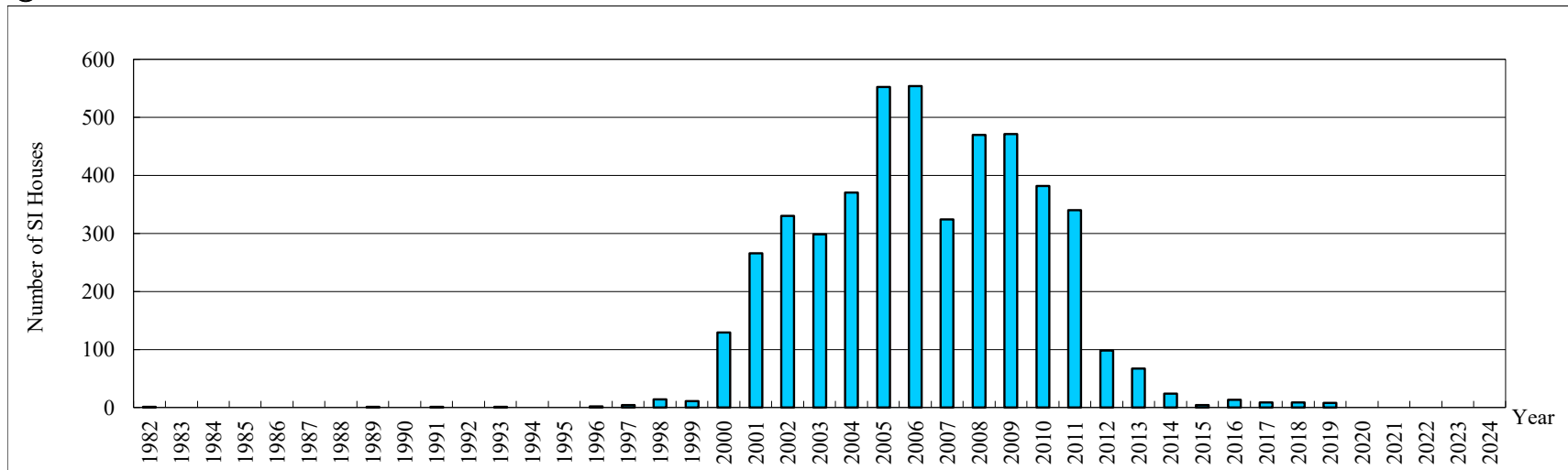
④ Number of SI buildings - Public/Private



Year	1985	1986	1987	1988	1989	1990	1991	1992	1993	1994	1995	1996	1997	1998	1999	2000	2001	2002	2003	2004	2005	2006	2007	2008	2009	2010	2011	2012	2013	2014	2015	2016	2017	2018	2019	2020	2021	2022	2023	2024
Public	0	1	1	1	0	0	0	1	0	0	5	20	14	31	42	25	36	35	30	28	32	36	42	52	33	31	46	75	87	79	45	45	55	33	58	41	34	34	20	28
Private	2	6	6	11	15	15	8	2	4	7	68	210	132	108	80	86	120	97	106	109	151	225	205	228	125	124	103	257	276	224	174	167	183	154	168	157	143	166	144	71

Total	Public	1176
	Private	4637
		<u>5813</u>

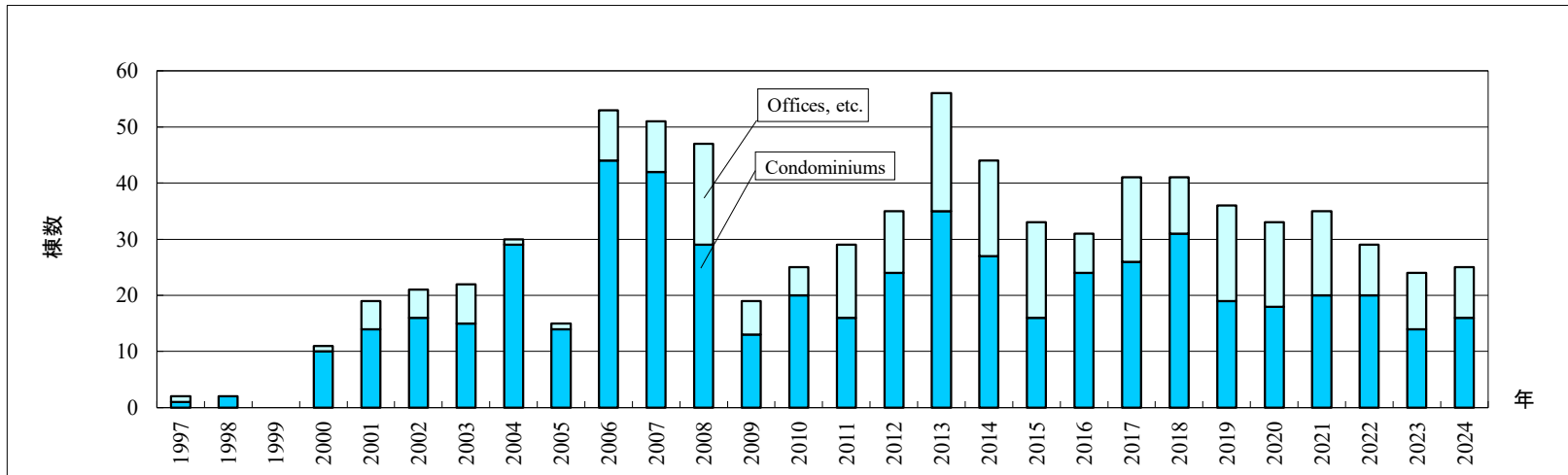
⑤ Number of SI Houses



Year	1982	1983	1984	1985	1986	1987	1988	1989	1990	1991	1992	1993	1994	1995	1996	1997	1998	1999	2000	2001	2002	
Houses	1	0	0	0	0	0	0	1	0	1	0	1	0	0	0	2	4	14	11	129	266	330
Year	2003	2004	2005	2006	2007	2008	2009	2010	2011	2012	2013	2014	2015	2016	2017	2018	2019	2020	2021	2022	2023	2024
Houses	298	370	552	554	324	470	471	382	340	98	67	24	4	13	9	9	8	0	0	0	0	0

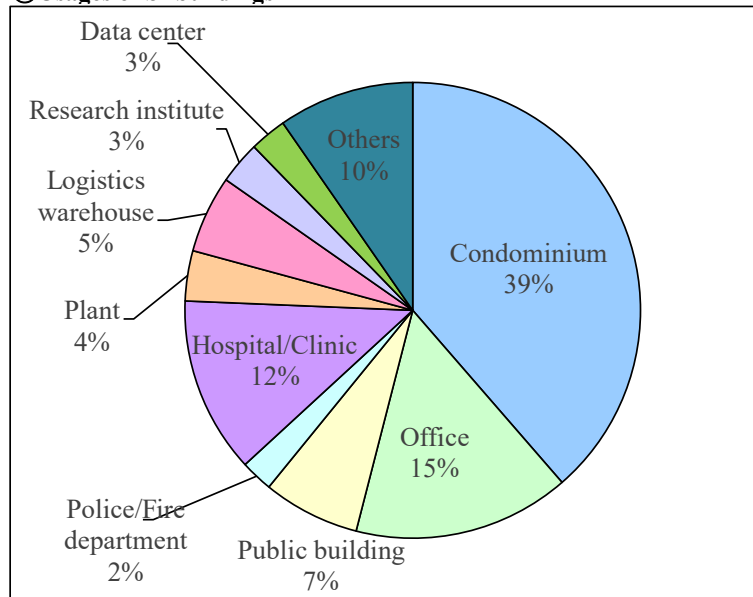
Total	Houses	4753
-------	--------	------

⑥ Number of High-rise SI buildings

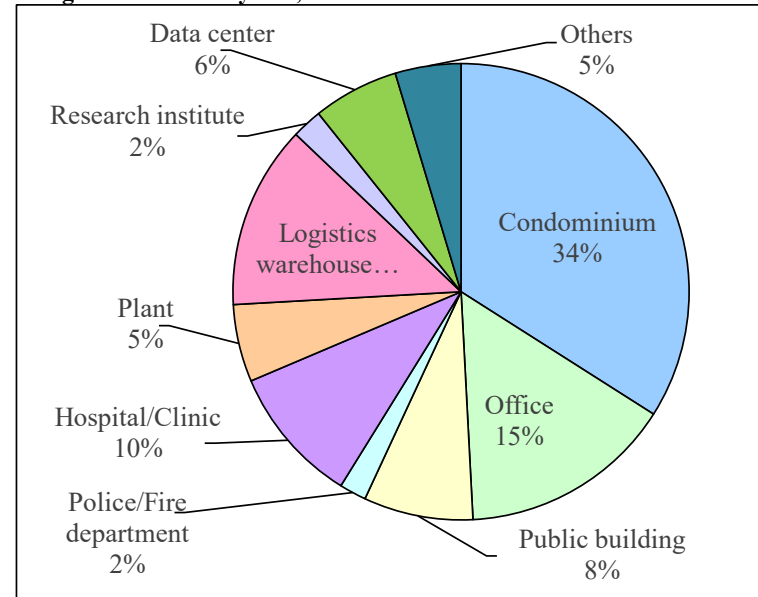


Year	1997	1998	1999	2000	2001	2002	2003	2004	2005	2006	2007	2008	2009	2010	2011	2012	2013	2014	2015	2016	2017	2018	2019	2020	2021	2022	2023	2024	Total
Offices, etc.	1	0	0	1	5	5	7	1	1	9	9	18	6	5	13	11	21	17	17	7	15	10	17	15	15	9	10	9	254
Condominiums	1	2	0	10	14	16	15	29	14	44	42	29	13	20	16	24	35	27	16	24	26	31	19	18	20	20	14	16	555
Subtotal	2	2	0	11	19	21	22	30	15	53	51	47	19	25	29	35	56	44	33	31	41	41	36	33	35	29	24	25	809

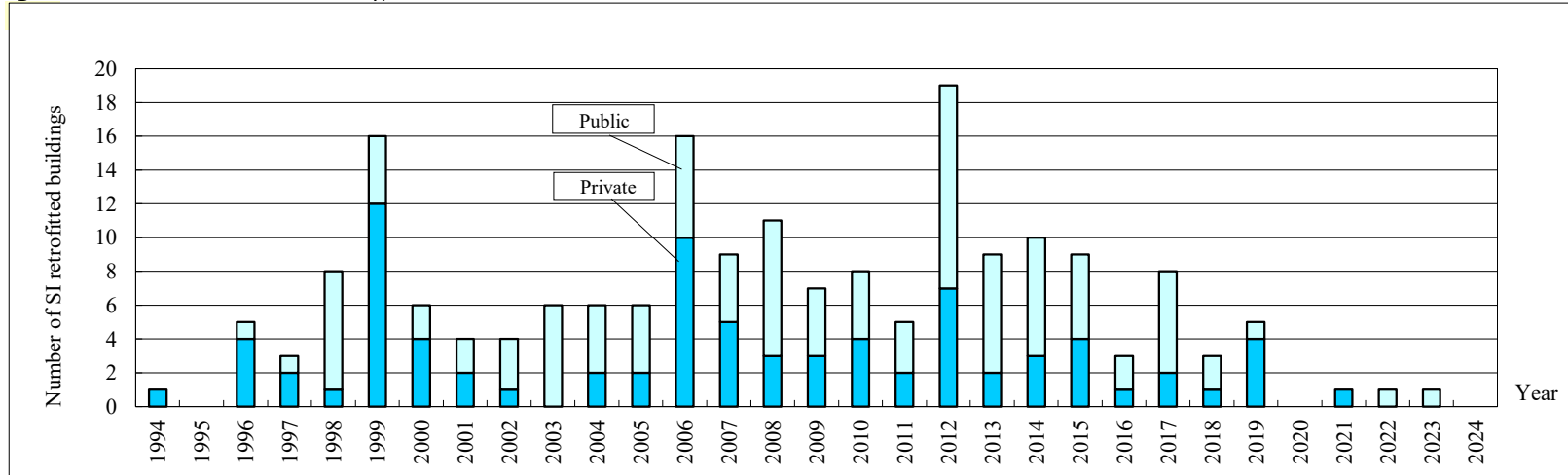
⑦ Usages of SI buildings



Usages in the last 5 years, from 2020 to 2024

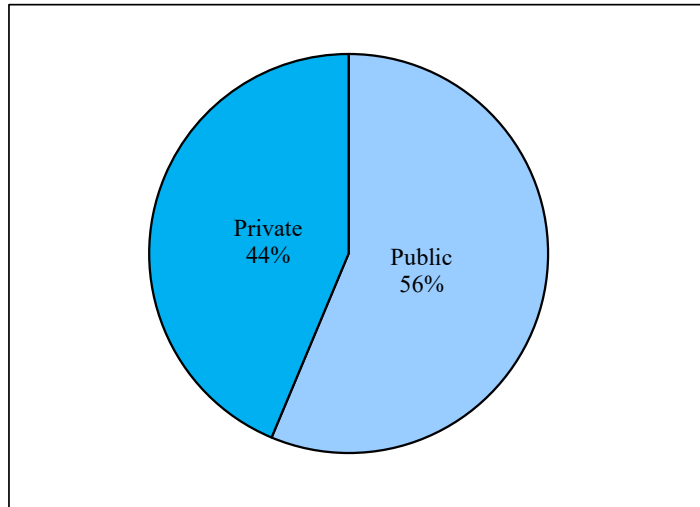


⑧ Number of SI retrofitted buildings



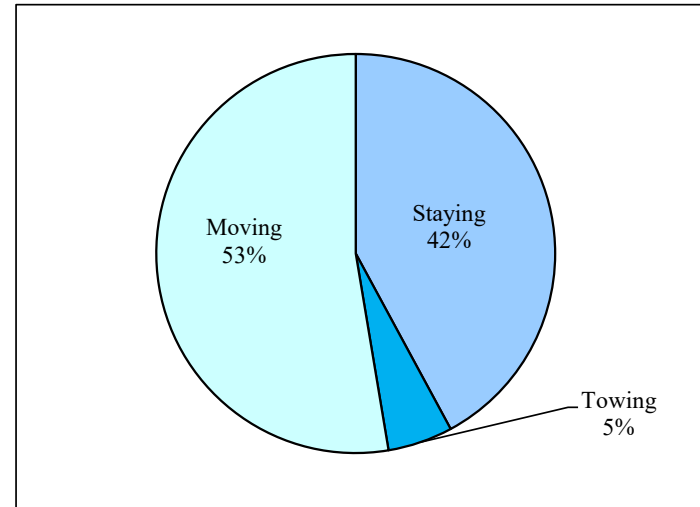
Year	1994	1995	1996	1997	1998	1999	2000	2001	2002	2003	2004	2005	2006	2007	2008	2009	2010	2011	2012	2013	2014	2015	2016	2017	2018	2019	2020	2021	2022	2023	2024	Total
Public	0	0	1	1	7	4	2	2	3	6	4	4	6	4	8	4	4	3	12	7	7	5	2	6	2	1	0	0	1	1	0	107
Private	1	0	4	2	1	12	4	2	1	0	2	2	10	5	3	3	4	2	7	2	3	4	1	2	1	4	0	1	0	0	0	83
																																190

⑨ Number of SI retrofitted buildings - Public/Private



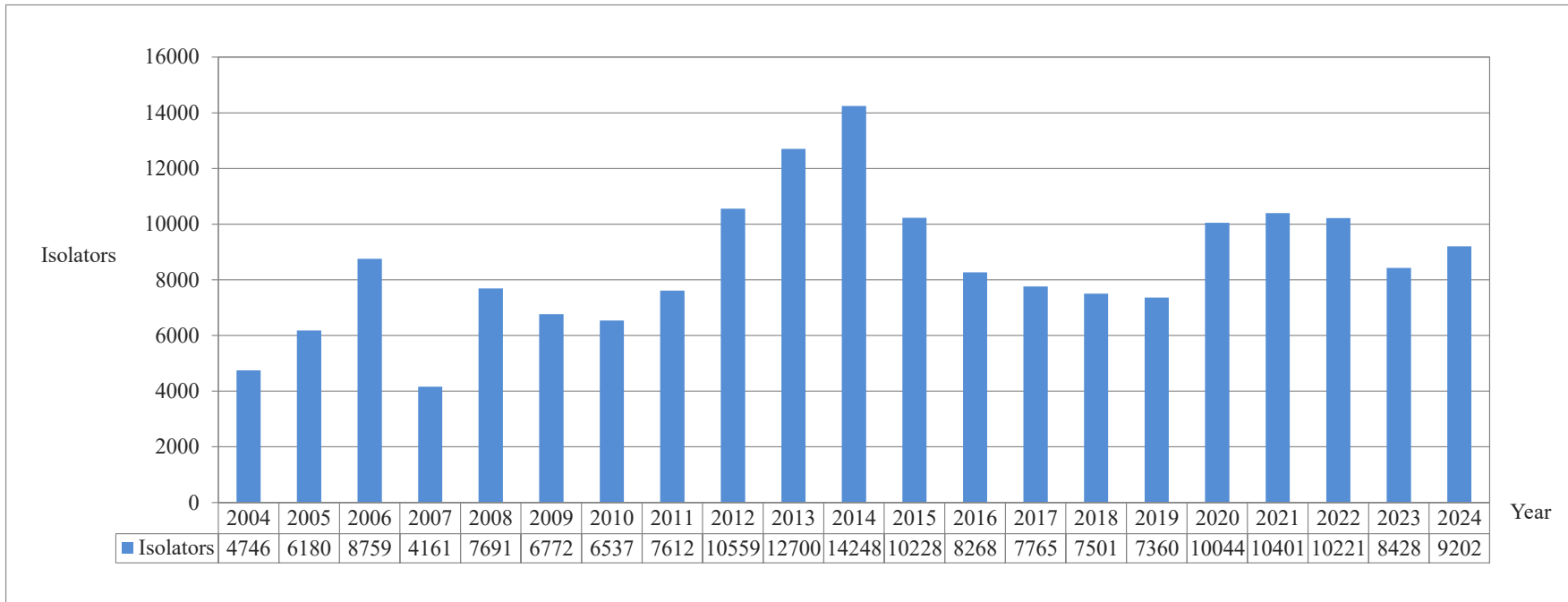
	Bldgs.
Public	107
Private	83
Total	190

⑩ Number of SI retrofitted buildings - Construction method



	Bldgs.
Staying	80
Towing	10
Moving	100

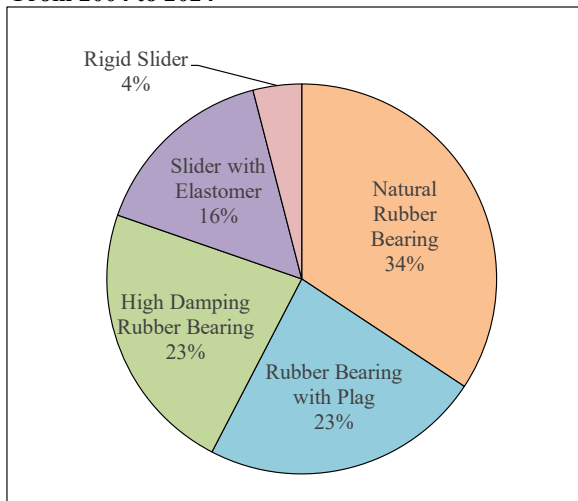
⑪ Number of isolators installed



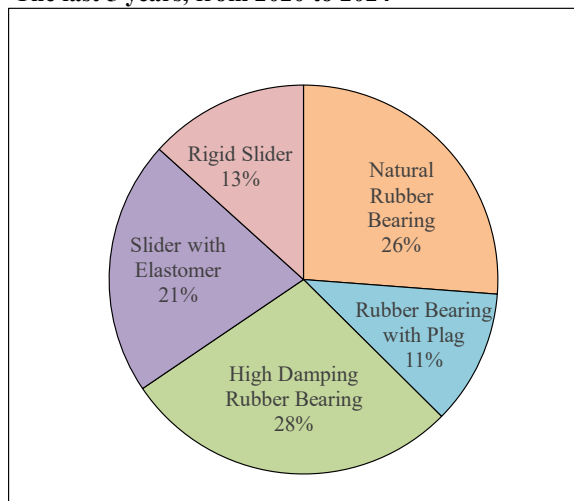
⑫ Types of Isolators installed

※The number of units to be delivered.

From 2004 to 2024



The last 5 years, from 2020 to 2024



Recent trends of Vibration Control “VC” Buildings in Japan

JSSI accumulates these data for VC buildings with the cooperation of members.

These data were accumulated until the end of 2023.

Figures show number of VC buildings, by year.

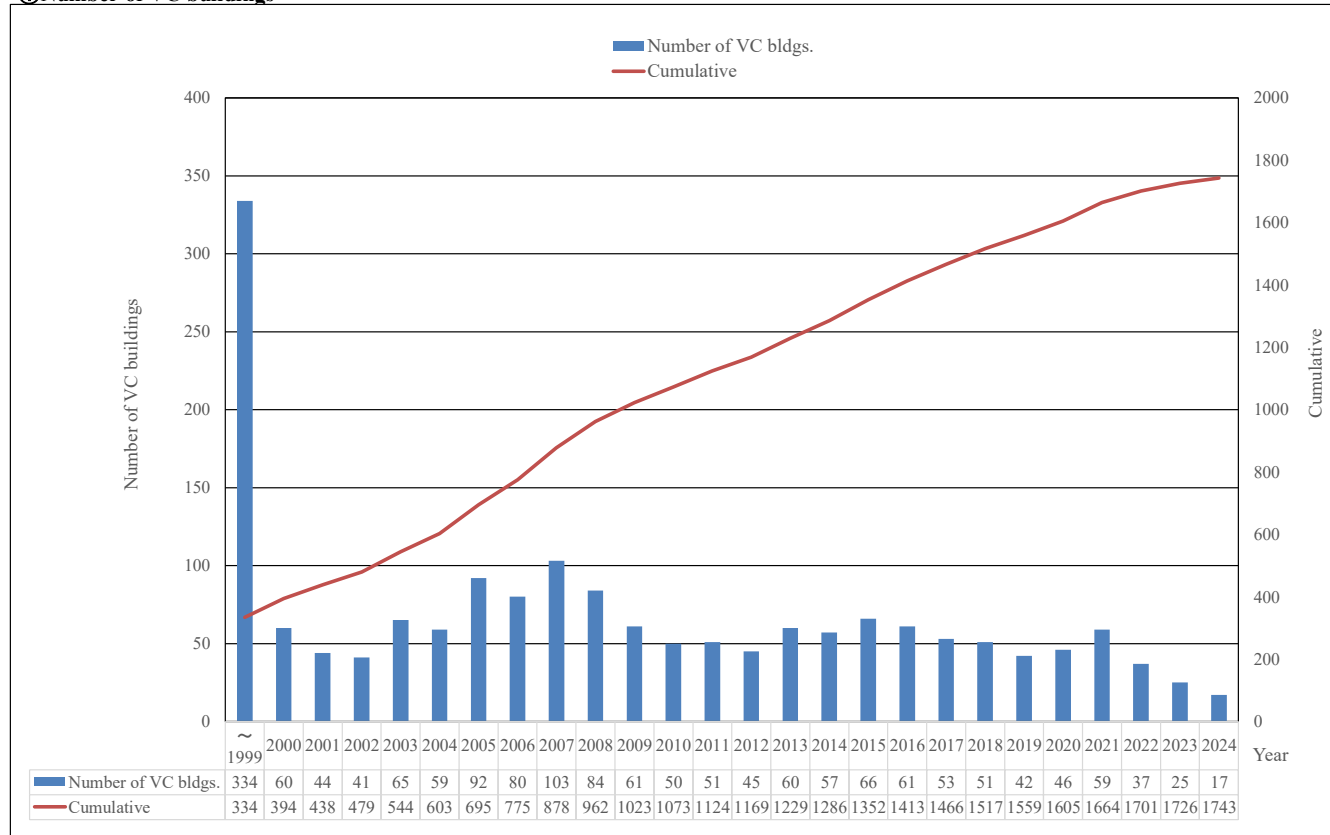
Aggregate results

①Number of VC buildings

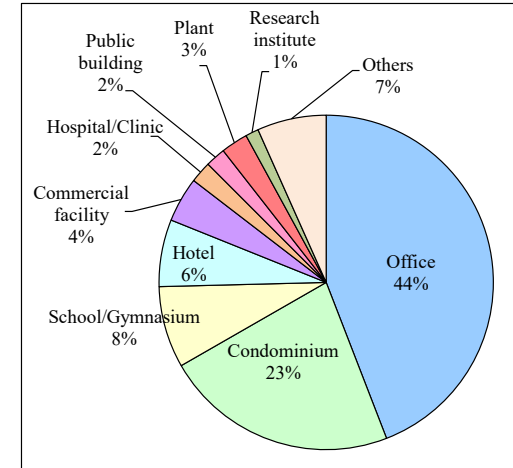
②Usages of VC buildings

③Types of VC devices installed

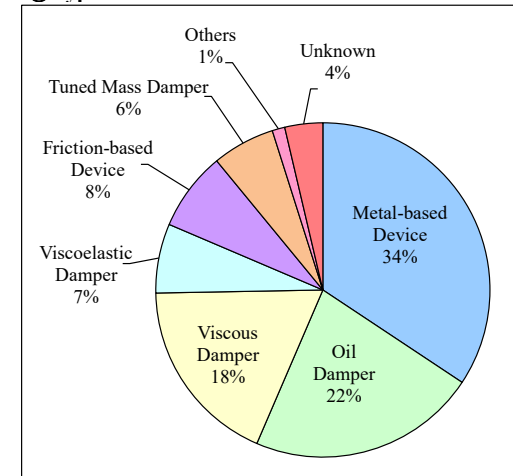
①Number of VC buildings



②Usages of VC buildings



③Types of VC devices installed



The ratio is based on the number of buildings, and when multiple devices are installed in one building, it is the main device.

Names of members who cooperated for accumulated data until the end of 2024

(98 companies)

ARTES CORPORATION	Isolator Techno Support	MHS Planners, Architects & Engineers	Starts Construction and Asset Management Co., Ltd.
ASANUMA CORPORATION	Japan Atomic Energy Agency	Mitsubishi Jisho Design Inc.	Sumitomo Mitsui Construction Co., Ltd.
Atlas sekkei co., ltd.	Japan Nuclear Fuel Limited	Molten Corporation	SWCC Corporation
AXS SATOW Inc.	JFE Civil Engineering Construction Corporation	Naito Architects Co., Ltd.	TAISEI CORPORATION
BBM Co., Ltd.	JR East Design Corporation	NCU Structural Design, Inc.	Takenaka Corporation
Bridgestone Corporation	JUST NISHINIHON Co., Ltd	NIHON SEKKEI, INC.	TEKKEN CORPORATION
b-techno systems inc.	K. ITO Architects & Engineers Inc.	Nikken Sekkei Ltd.	The Chugoku Electric Power Co., Inc.
Constec Engi, Co.	KAJIMA CORPORATION	NIPPON STEEL ENGINEERING CO., LTD.	TOA CORPORATION
Dai Nippon Construction	KEN KEN Co., Ltd.	Nishimatsu Construction Co., Ltd.	TOBISHIMA CORPORATION
DAIHO CORPORATION	Kiuchi Construction Co., Ltd.	Nitta Corporation	TODA CORPORATION
DAIKEN SEKKEI, INC.	KONOIKE CONSTRUCTION CO., LTD.	NTT FACILITIES, INC.	Tohata Architects & Engineers, Inc. J
DAISUE CONSTRUCTION CO., LTD.	KOSAKA KOMUTEN Co., Ltd.	OBAYASHI CORPORATION	Tokyo Electric Power Company Holdings, Inc.
Daiwa House Industry Co., Ltd.	KOUKEN Structural Engineers Co., Ltd.	OILES CORPORATION	TOKYO ELECTRIC POWER SERVICES CO., LTD.
Dynamic Design Inc.	KOZO KEIKAKU ENGINEERING Inc.	OKUMURA CORPORATION	Tokyo Fabric Industry Co., Ltd.
Electric Power Development Co., Ltd.	KozoSoft Co., LTD.	ORIMOTO STRUCTURAL ENGINEERS INC.	Tokyo Kenchiku Structural Engineers Inc.
Fujita Corporation	Kumagai Gumi Co., Ltd.	Ove Arup & Partners Japan Ltd.	Tokyu Construction Co., Ltd.
Fukuda Corporation	Kume Sekkei Co., Ltd.	P.S. Construction Co., Ltd.	TOMOE Corporation
HASEKO Corporation	KURASHIKI KAKO CO., LTD.	PENTA-OCEAN CONSTRUCTION CO., LTD.	TOYO CONSTRUCTION CO., LTD.
HAZAMA ANDO CORPORATION	KUROSAWA CONSTRUCTION CO., LTD.	RIA (Research Institute of Architecture)	Toyo Tire Corporation
Hokkaido Electric Power Company	MAEDA CORPORATION	S. A. I. Structural Design Co., Ltd.	UEKI Corporation
Hulic Property Solution Co., Ltd.	Matsui Construction Co., Ltd.	SEIBU CONSTRUCTION CO., LTD.	YAHAGI CONSTRUCTION CO., LTD.
i2S2 co., ltd.	MATSUMURA-GUMI CORPORATION	SENQCIA CORPORATION	Yamashita Sekkei, Inc.
ICHIJO CO., LTD.	MATSUO Corporation	Shikoku Electric Power Company, Incorporated	Yasui Architects & Engineers, Inc.
ISHIKAWA KENSETSU CO., LTD.	MEIKÔ CONSTRUCTIN CO., LTD.	SHIMIZU CORPORATION	
Ishimoto Architectural & Engineering Firm, Inc.	MENSHIN ENGINEERING CO., LTD.	SHINMEI-KOUMUTEN Ltd.	